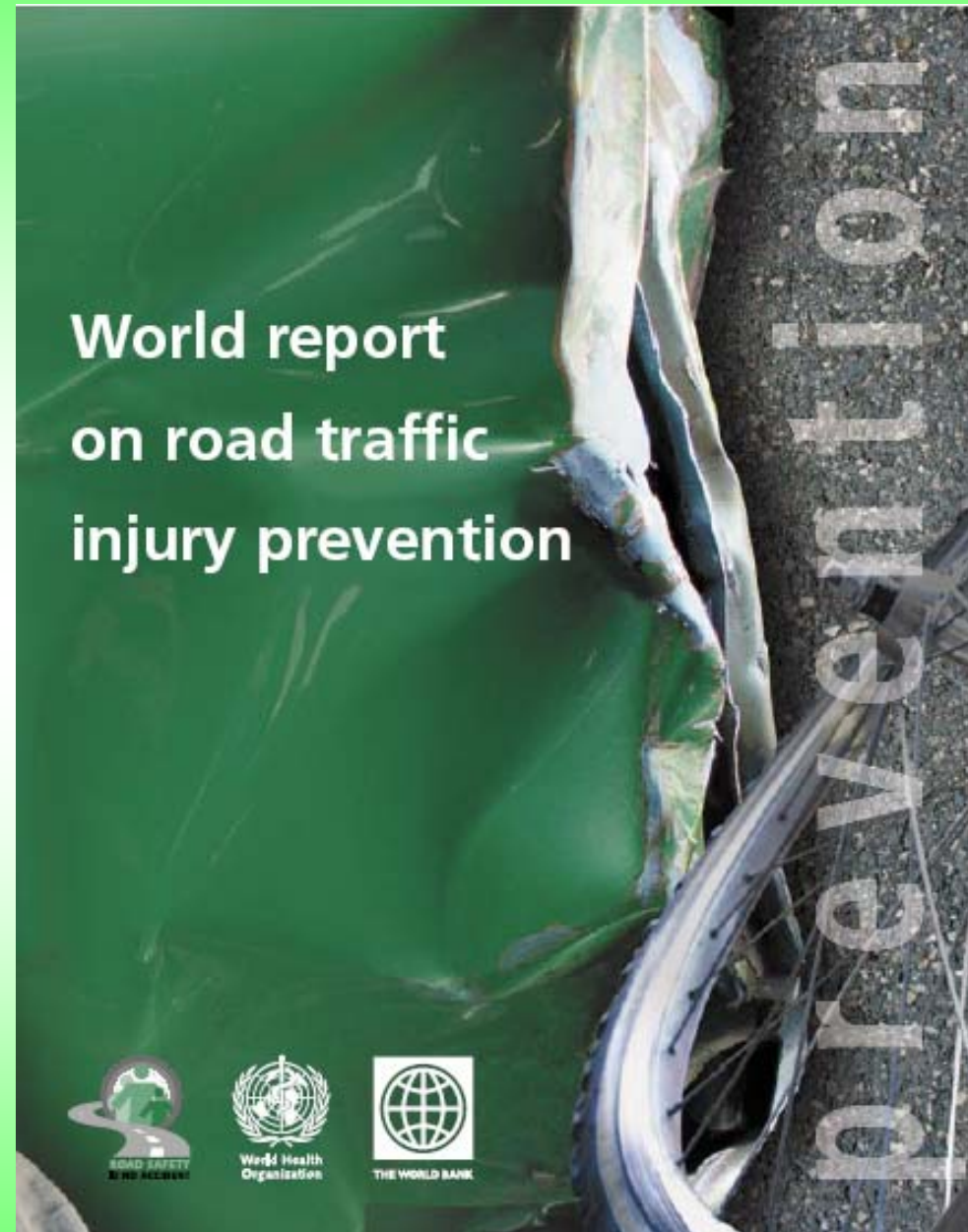


National Road Safety Committee (NRSC)



Bangkok, AUG 2010

World Report 2004



Part 1: Table 1.1, page 4

TABLE 1.1

Leading causes of deaths by age group, world, 2002

Rank	0–4 years	5–14 years	15–29 years	30–44 years	45–59 years	≥60 years	All ages
1	Lower respiratory infections 1 890 008	Childhood cluster diseases 219 434	HIV/AIDS 707 277	HIV/AIDS 1 178 856	Ischaemic heart disease 1 043 978	Ischaemic heart disease 5 812 863	Ischaemic heart disease 7 153 056
2	Diarrhoeal diseases 1 577 891	Road traffic injuries 130 835	Road traffic injuries 302 208	Tuberculosis 390 004	Cerebrovascular disease 623 099	Cerebrovascular disease 4 685 722	Cerebrovascular disease 5 489 591
3	Low birth weight 1 149 168	Lower respiratory infections 127 782	Self-inflicted injuries 251 806	Road traffic injuries 285 457	Tuberculosis 400 704	Chronic obstructive pulmonary diseases 2 396 739	Lower respiratory infections 3 764 415
4	Malaria 1 098 446	HIV/AIDS 108 090	Tuberculosis 245 818	Ischaemic heart disease 231 340	HIV/AIDS 390 267	Lower respiratory infections 1 395 611	HIV/AIDS 2 818 762
5	Childhood cluster diseases 1 046 177	Drowning 86 327	Interpersonal violence 216 169	Self-inflicted injuries 230 490	Chronic obstructive pulmonary diseases 309 726	Trachea, bronchus, lung cancers 927 889	Chronic obstructive pulmonary diseases 2 743 509
6	Birth asphyxia and birth trauma 729 066	Malaria 76 257	Lower respiratory infections 92 522	Interpersonal violence 165 796	Trachea, bronchus, lung cancers 261 860	Diabetes mellitus 749 977	Diarrhoeal diseases 1 766 447
7	HIV/AIDS 370 706	Tropical cluster diseases 35 454	Fires 90 845	Cerebrovascular disease 124 417	Cirrhosis of the liver 250 208	Hypertensive heart disease 732 262	Childhood-cluster diseases 1 359 548
8	Congenital heart anomalies 223 569	Fires 33 046	Drowning 87 499	Cirrhosis of the liver 100 101	Road traffic injuries 221 776	Stomach cancer 605 395	Tuberculosis 1 605 063
9	Protein–energy malnutrition 138 197	Tuberculosis 32 762	War 71 680	Lower respiratory infections 98 232	Self-inflicted injuries 189 215	Tuberculosis 495 199	Trachea, bronchus, lung cancers 1 238 417
10	STDs excluding HIV 67 871	Protein–energy malnutrition 30 763	Hypertensive disorders 61 711	Poisonings 81 930	Stomach cancer 185 188	Colon and rectum cancers 476 902	Malaria 1 221 432
11	Meningitis 64 255	Meningitis 30 694	Maternal haemorrhage 56 233	Fires 67 511	Liver cancer 180 117	Nephritis and nephrosis 440 708	Road traffic injuries 1 183 492

Part 1: Table 1.2, page 5

TABLE 1.2

Change in rank order of DALYs for the 10 leading causes of the global burden of disease

1990		2020	
Rank	Disease or injury	Rank	Disease or injury
1	Lower respiratory infections	1	Ischaemic heart disease
2	Diarrhoeal diseases	2	Unipolar major depression
3	Perinatal conditions	3	Road traffic injuries
4	Unipolar major depression	4	Cerebrovascular disease
5	Ischaemic heart disease	5	Chronic obstructive pulmonary disease
6	Cerebrovascular disease	6	Lower respiratory infections
7	Tuberculosis	7	Tuberculosis
8	Measles	8	War
9	Road traffic injuries	9	Diarrhoeal diseases
10	Congenital abnormalities	10	HIV

DALY: Disability-adjusted life year. A health-gap measure that combines information on the number of years lost from premature death with the loss of health from disability.

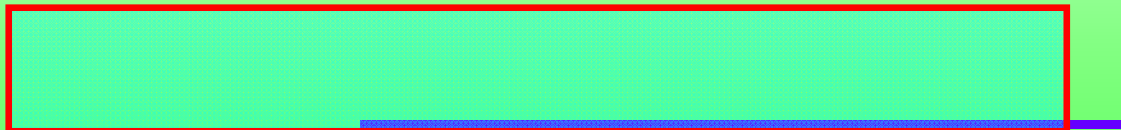
First Global Ministerial Conference (Moscow: 19-20/11/2009)



First Global Ministerial Conference (Moscow: 19E20/11/2009)

4. Strategy (x9):

5.



Lao PDR: Background

- **GoL Invest.** ⇒ **>45% of GDP to Infrastructures**
- **Q. of life imp.** ⇒ **capacity to buy (veh.)**
⇒ **Acc. increased (die & property lost)**
- **Solution and** ⇒ **Create rule, regulation, law discrimination**
- **Requirement** ⇒ **man, money, management, tools,**

Lao Legislations

- Decree 104/PM, 26/4/05 (Rd Safety Stra. & Act. Plan)
- Decree 252/PM, 6/11/06 (ToR of NRSC)
- Decree 302/PM, 27/12/06 (Appoint NRSC Chair)
- Decree 188/PM, 3/7/07 (Fine)

- Agreement 001/NRSC, 23/5/08 (ToR of NRSC Sec.)
- Agreement 002/NRSC, 23/5/08 (ToR of PRSC)
- Agreement ___/NRSC, (ToR of NRSC Sec. Off.)
- Agreement ___/NRSC, (ToR of PRSC Off.)
- Agreement ___/NRSC, (RSF Rule & Regulation)

Road Safety Strategy

1. Fatality per 10,000 veh.: ⇒ 12 person (2010)
⇒ 7 person (2015)
⇒ 2 person (2020)

2. S. Framework of 5 Es: ⇒ E1: education
⇒ E2: enforcement
⇒ E3: environment
⇒ E4: emergency ser.
⇒ E5: evaluation & res.

Road Safety Strategy

- 3. Seven priorities:**
- ⇒ **driving skill**
 - ⇒ **helmet**
 - ⇒ **visibility**
 - ⇒ **drink/drive**
 - ⇒ **speeding**
 - ⇒ **traffic. mngmt**
 - ⇒ **seat belt**

4. Institutions & ToRs ⇒ **NRSC, PRSC,
DRSC !**

4. Institutions and ToRs

Road Safety Action Plan

- **15 projects:**
 - ⇒ **1. Coordination & mngmt**
 - ⇒ **2. Acc. data sys.**
 - ⇒ **3. Source of funding**
 - ⇒ **4. Rd. safety design**
 - ⇒ **5. Black spot improvement**
 - ⇒ **6. Education**
 - ⇒ **7. Driver training & testing**
 - ⇒ **8. Public awareness**

Road Safety Action Plan

- **15 projects:**
 - ⇒ **9. Vehicle standard**
 - ⇒ **10. Legislation**
 - ⇒ **11. Enforcement**
 - ⇒ **12. Emergency ser.**
 - ⇒ **13. RS research**
 - ⇒ **14. Acc. costing**
 - ⇒ **15. Partnership**

Fine on Traffic Violence

(188/PM, 3/7/2007)

Clause 5 (**BAC**: drunk-drive > 0.8 g/l):

- 1). Bicycle: 10,000 kip
- 2). Motorcycle, Tricycle, Farm Tractor: 50,000 kip
- 3). Car, Jeep, Van: 100,000 kip
- 4). Passenger Veh.: 250,000 kip
- 5). Tracks: 500,000 kip
- 6). Bus: 1,000,000 kip

Tax on Alcohol

(04/NA, 19/5/2005)

Item 57 (Vine, LaoSaTho):

5% Local Produce; 10% Import

Item 58 (Beer, Alcohol, Drinks c Alcohol):

10% Local Produce; 10% Import

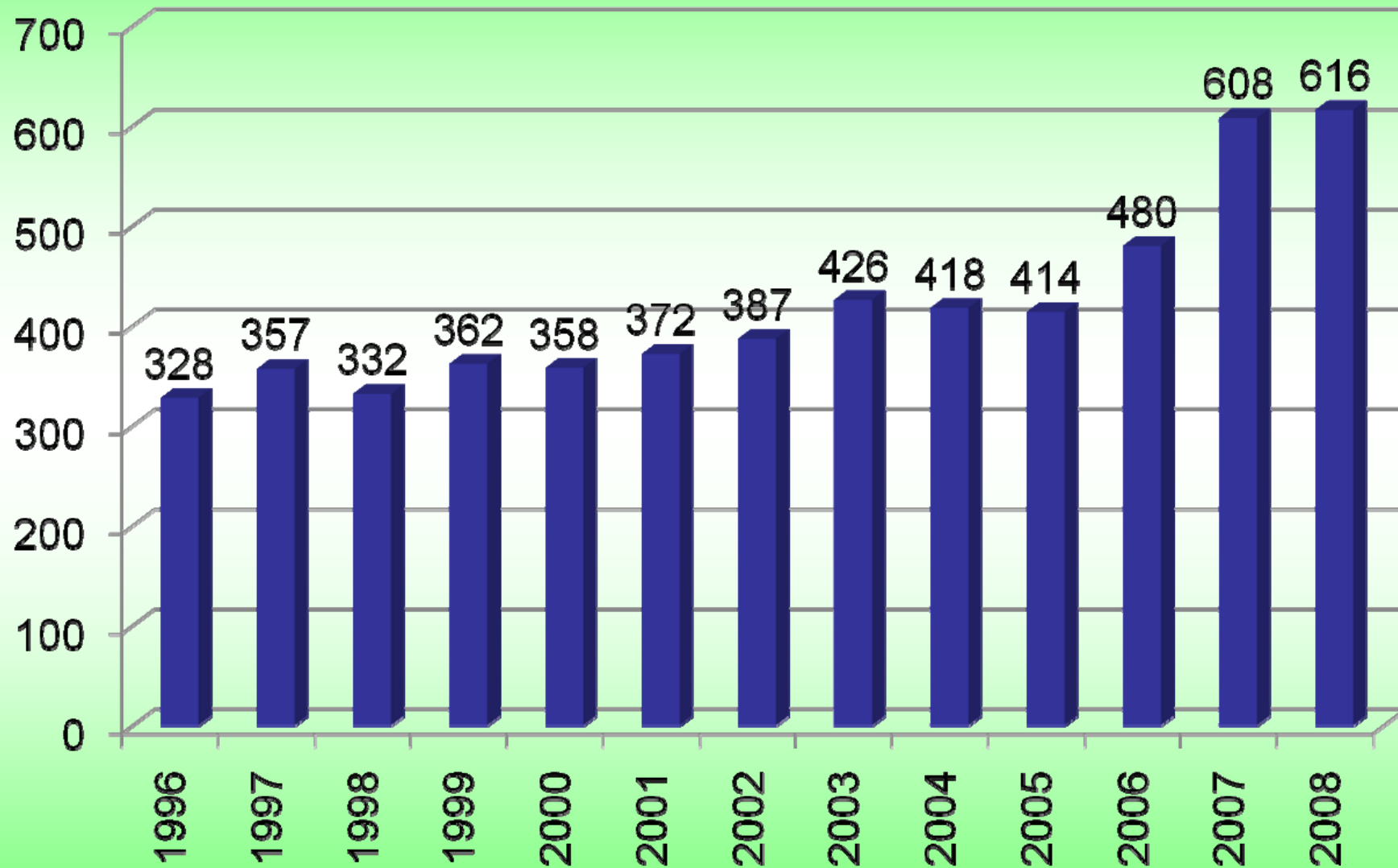
Fees on Service Charge

(03/P, 19/11/2008)

Clause 14. VII (channel to RSF):

- 1). 0.5% on top of the import tax.
- 2). 0.5% on indirect tax of local product (usage and business).

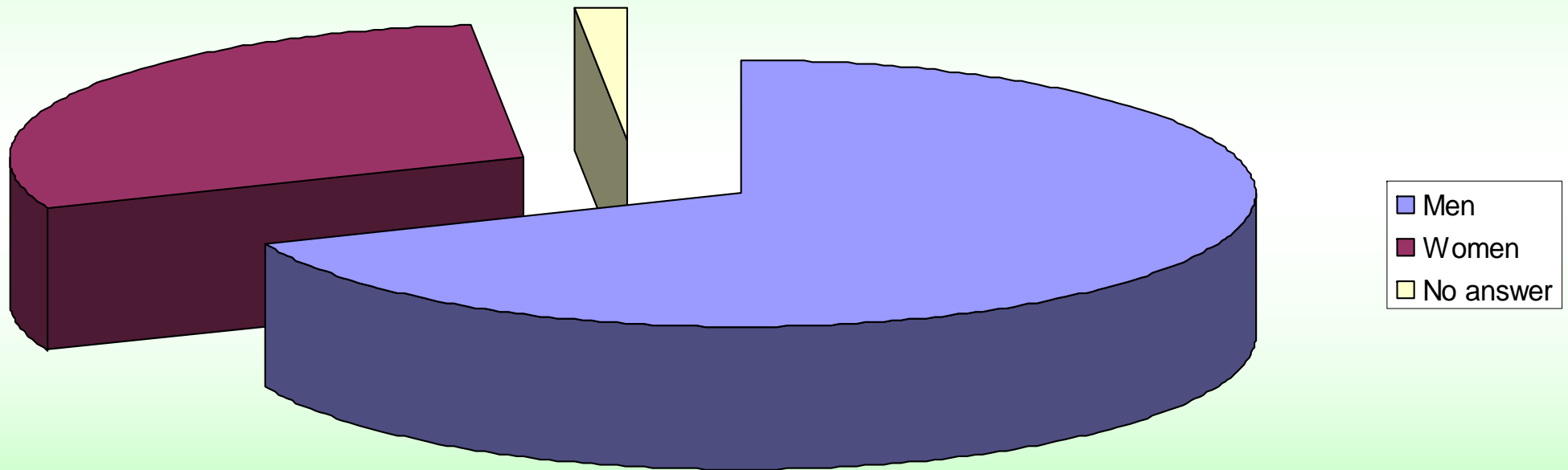
Fatality over 10 years



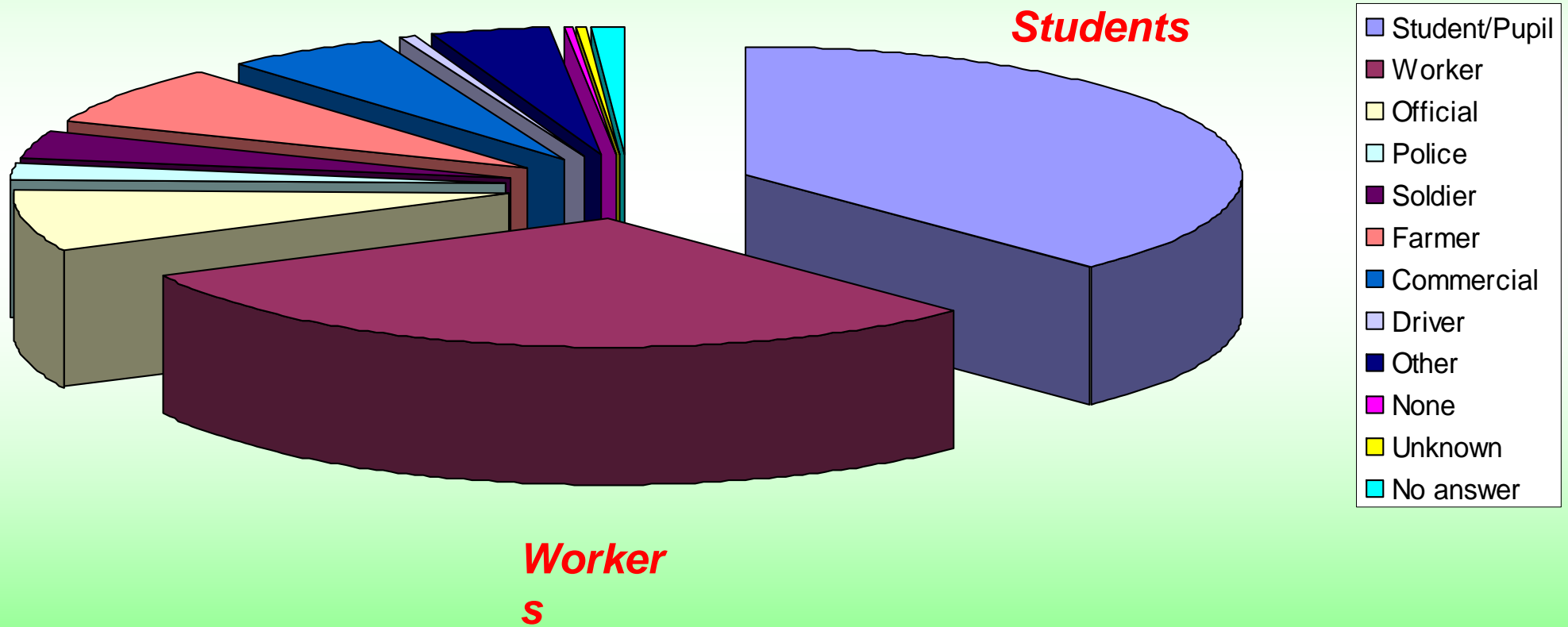
Accident Record (1996- 2009)

Year	Registered Vehicles	No. of Accident	No. of Fatality	Fatality Rate per 10,000 vehicle	Fatality Rate per 100,000 population
1996	156,302	3,330	328	20.9	7.1
1997	170,627	3,407	357	20.9	7.8
1998	182,069	3,617	332	18.2	7.2
1999	187,041	3,159	362	19.3	7.9
2000	200,756	4,335	358	17.8	7.8
2001	220,491	4,681	372	16.8	8.1
2002	252,508	4,634	387	15.3	8.4
2003	254,444	5,177	426	16.7	9.3
2004	366,139	4,256	418	11.4	9.1
2005	430,406	4,619	414	9.6	7.4
2006	568,290	4,260	480	8.4	8.5
2007	641,081	5,198	608	9.5	10.5
2008	768,606	5,025	616	8.0	10.6
2009	886,348	5,490	753	8.5	13.2

RTA victim Ratio

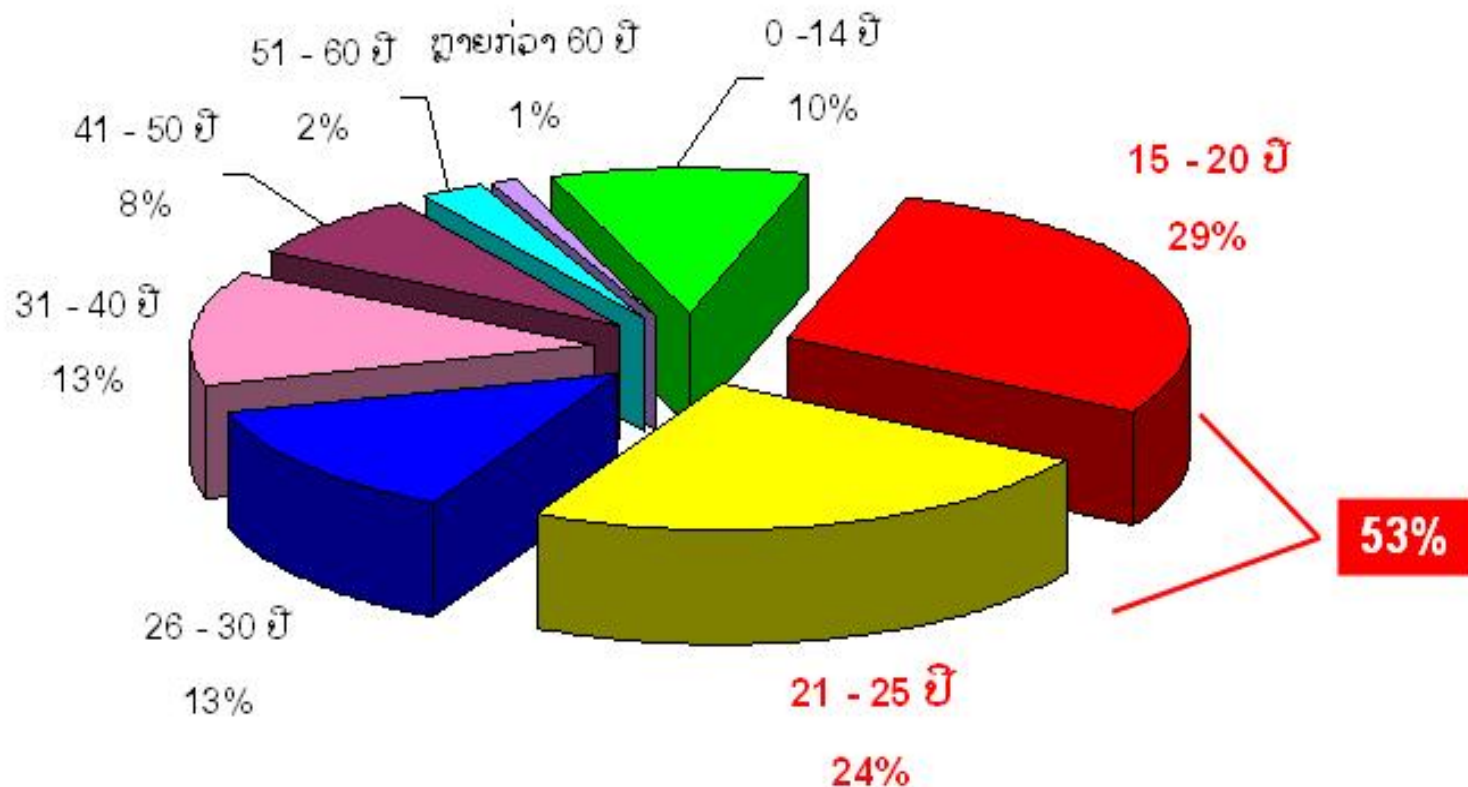


RTA by Profession



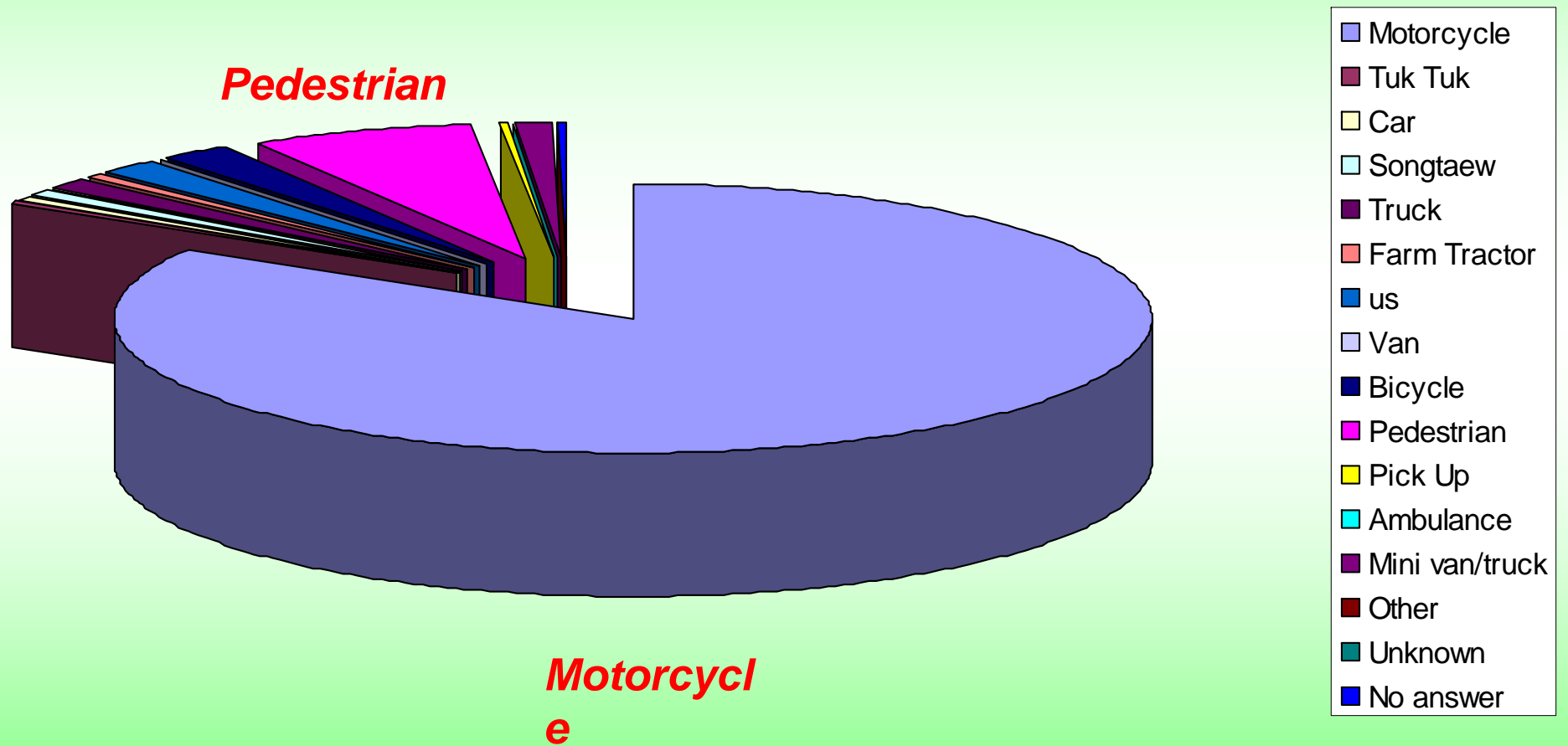
RTA Victims by Age Groups 2007

ກຸ່ມອາຍຸຜູ້ຖືກເຄາະຮ້າຍຈາກອຸປະຕິເຫດຕາມທ້ອງຖະໜົນ 2007

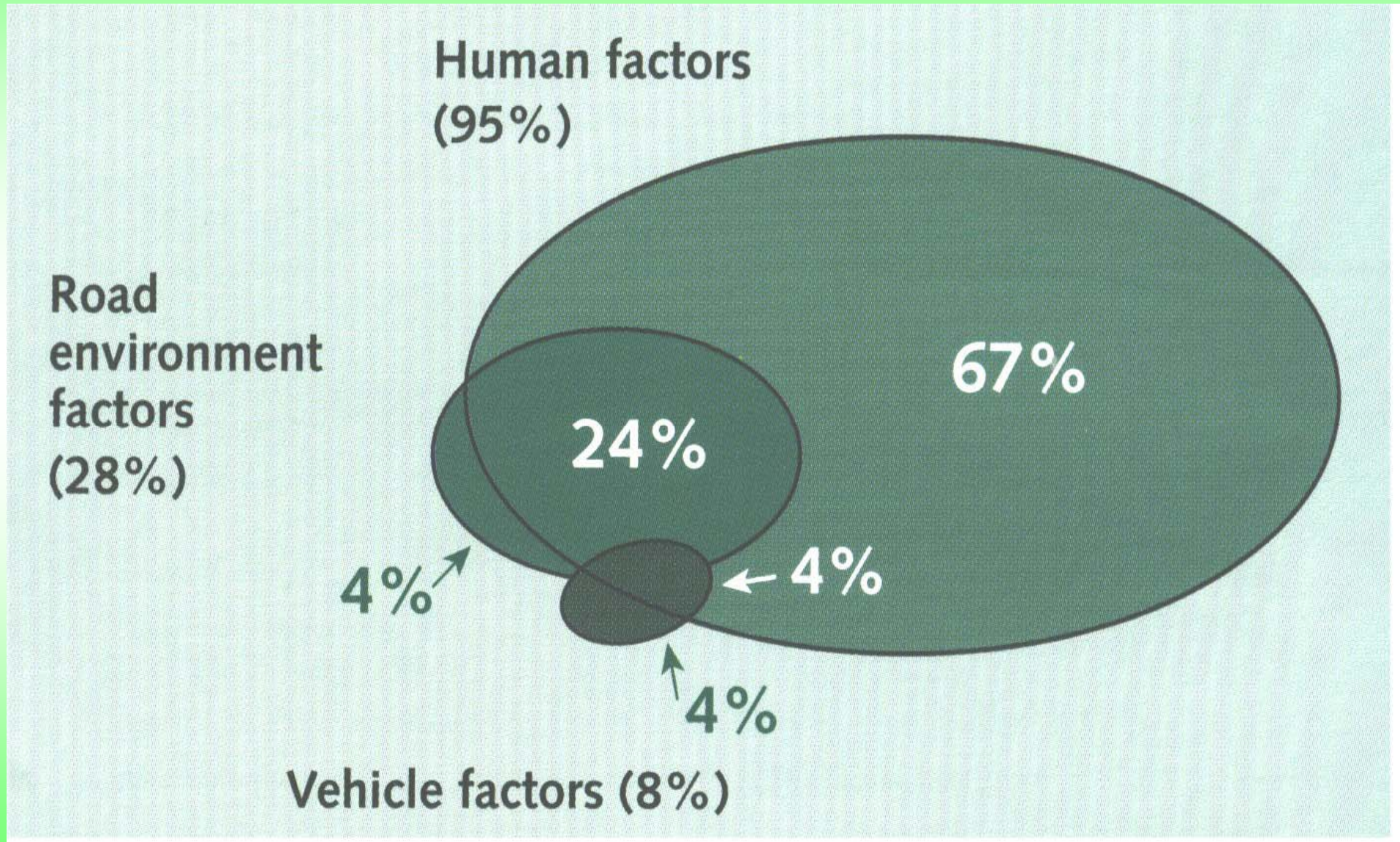


TA victims of 53% were between 15-25 years old for three consecutive years.

RTA by Type of Vehicles



Factors causing Accident





**Thank
you**